

# Student Learning Update

**Jennifer Sinsebox**  
**Executive Director of Curriculum**

**Mary Vito**  
**Pupil Personnel Director**

**Andrea House**  
**Secondary School Counselor**

March 25, 2019

**WHEATLAND-CHILI CENTRAL SCHOOL DISTRICT**

*Encouraging All Students to Meet College and Career Readiness Expectations  
Supporting Students in the Development of 21st Century and Social/Emotional Learning Skills*

# Counseling Plan 2019-2020


# School Counseling Plan: Best-Practice

*The intentional assessment, development, implementation and continuous improvement of a comprehensive P-12 School Counseling Plan enables school districts to provide a continuum of supports and services to enhance student achievement and success.*



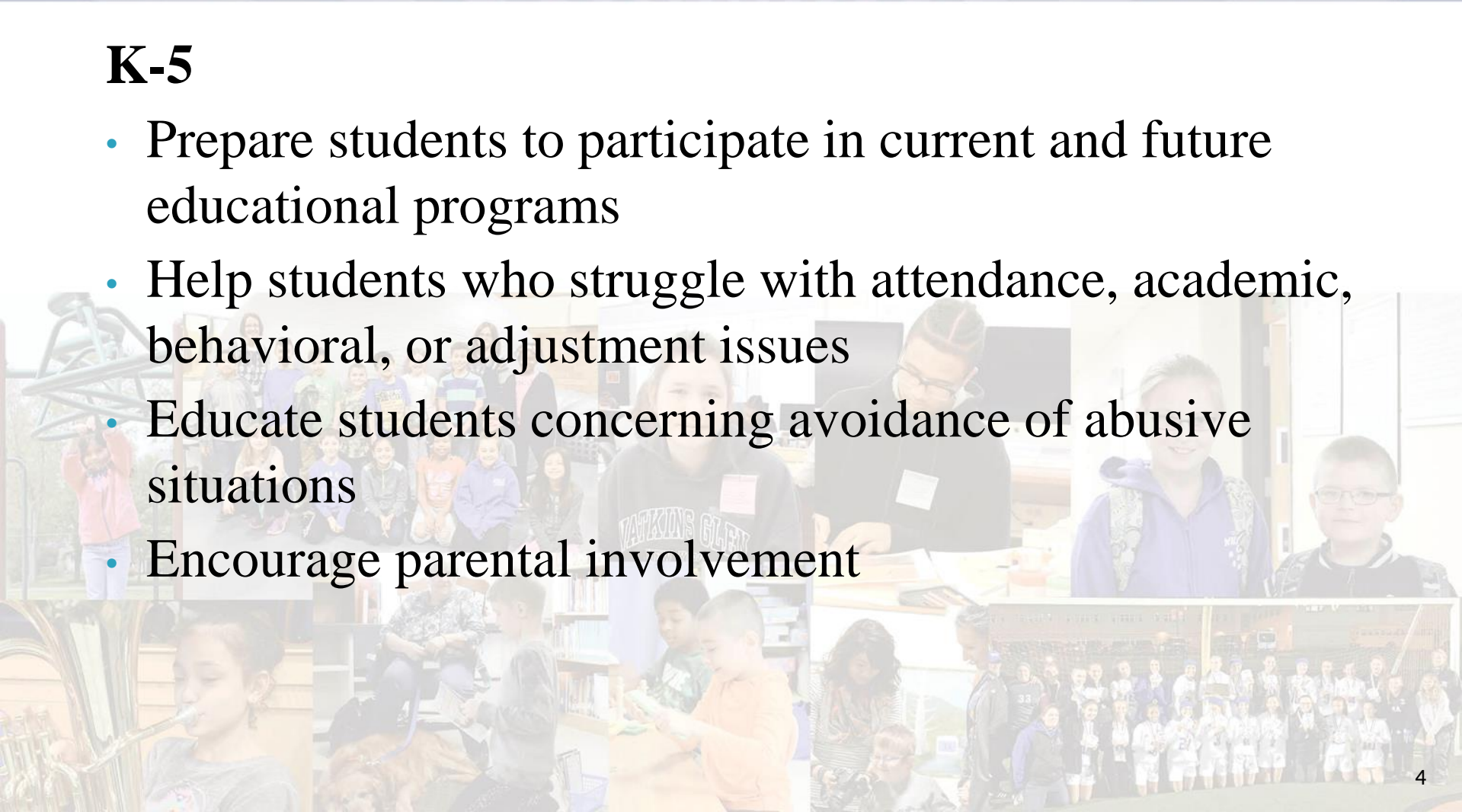
# Rationale

**NYSED Commissioner's Regulation Part 100.2 (j) requires school counseling programs to include:**

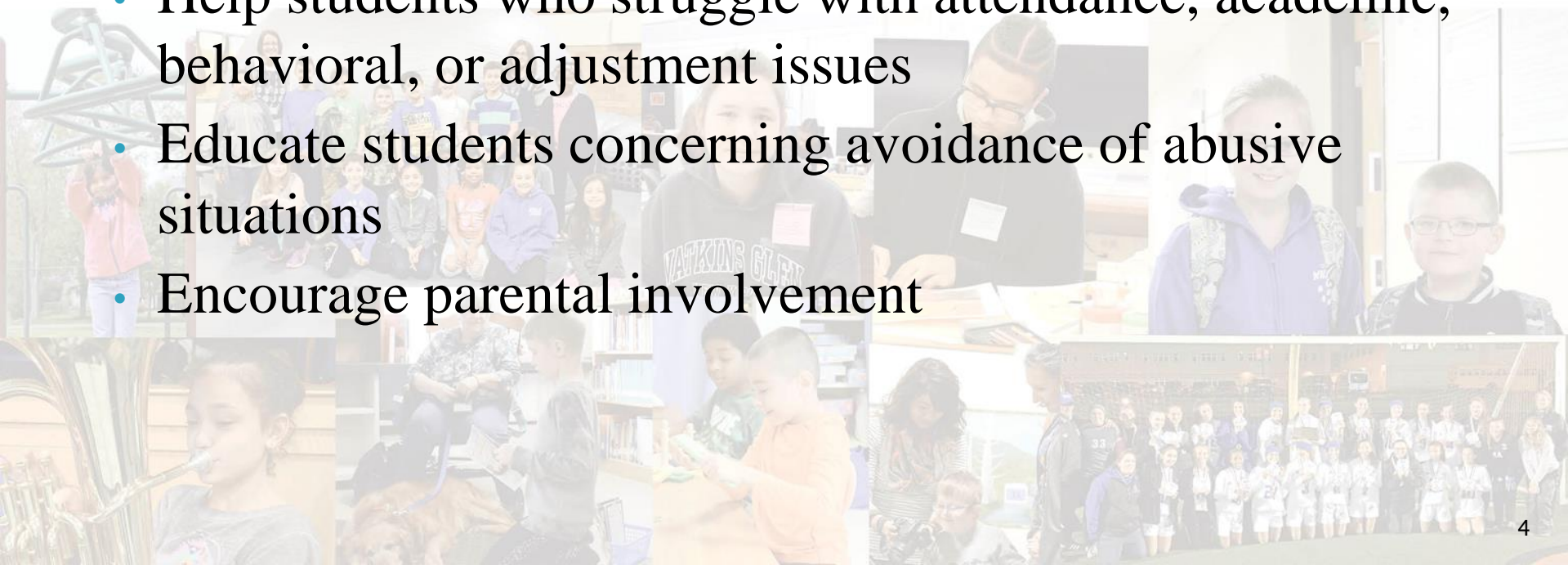


# K-5

- Prepare students to participate in current and future educational programs
- Help students who struggle with attendance, academic, behavioral, or adjustment issues
- Educate students concerning avoidance of abusive situations
- Encourage parental involvement



4

- 
- Help students who struggle with attendance, academic, behavioral, or adjustment issues
  - Educate students concerning avoidance of abusive situations
  - Encourage parental involvement
- 4

# Rationale

**NYSED Commissioner's Regulation Part 100.2 (j) requires school counseling programs to include:**

## 6-12

- An annual review of each student's educational progress and career plans
- Instruction of each grade level to help learn various careers and career planning
- Enable students to benefit from curriculum
- Help students develop post-secondary and career plans
- Help students who struggle with attendance, academic, behavioral, or adjustment issues
- Encourage parent involvement



# Guidance Programs and Comprehensive Developmental School Counseling/Guidance Program Commissioner's Regulations

- ▶ The Program
- ▶ The Services
  - K-5
  - 6-12
- ▶ School Counseling/Guidance Core Curriculum
  - Direct Student Services
  - Indirect Student Services
- ▶ The Plan
  - Program Delivery
  - Program Development
- ▶ Advisory Council

# The Program

- ▶ Program is K-12
- ▶ 4 Parts per Guidelines through ASCA (Appendix B)
  - Foundation
  - Management
  - Delivery
  - Accountability
- ▶ Access to certified School Counselor
- ▶ Program addresses 3 domains:
  - Academic, Career, Social-Emotional
- ▶ Student competencies – ASCA standards framework

# ASCA National Model

- 6 Mindsets
- 29 Behaviors





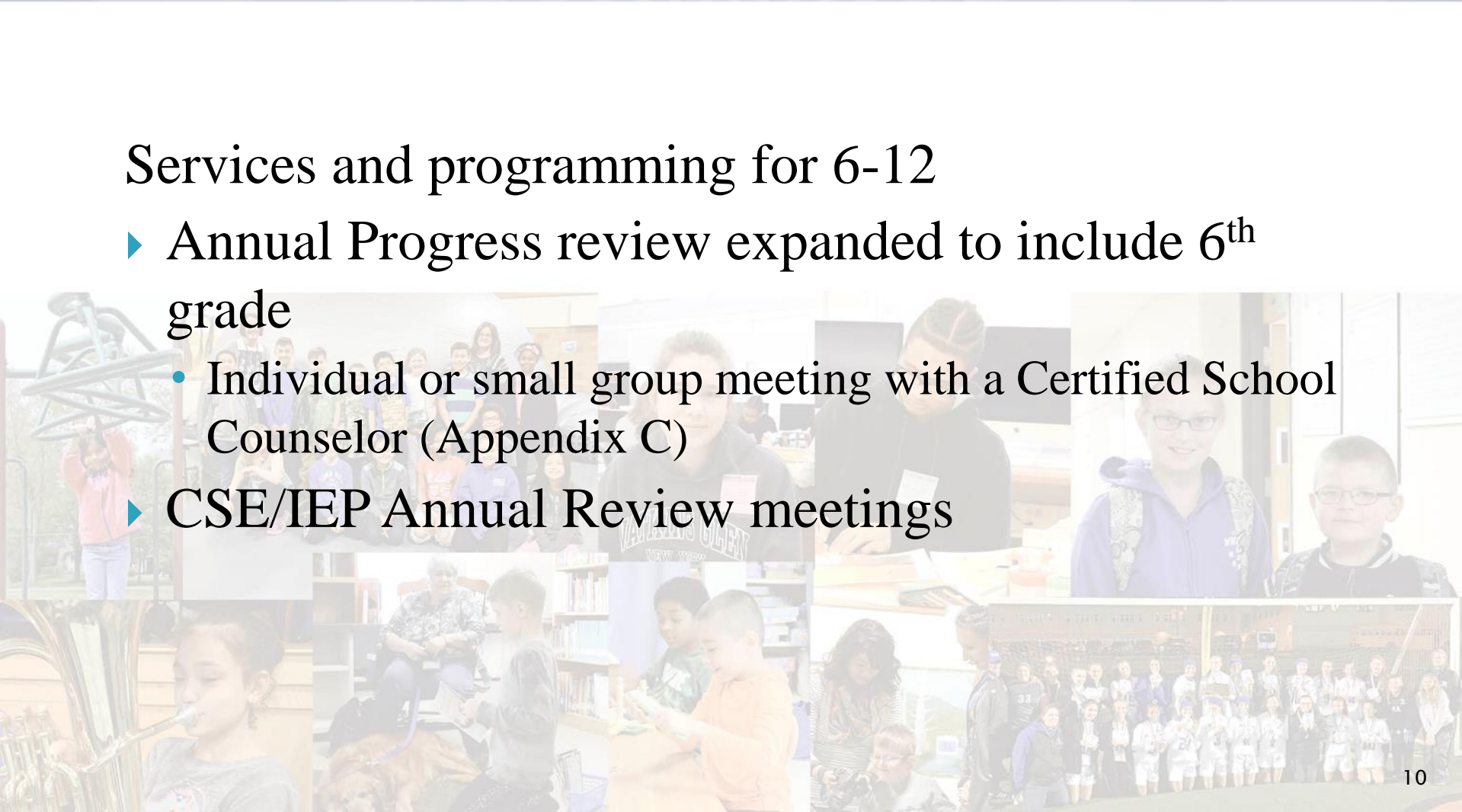
# The Services: K-5

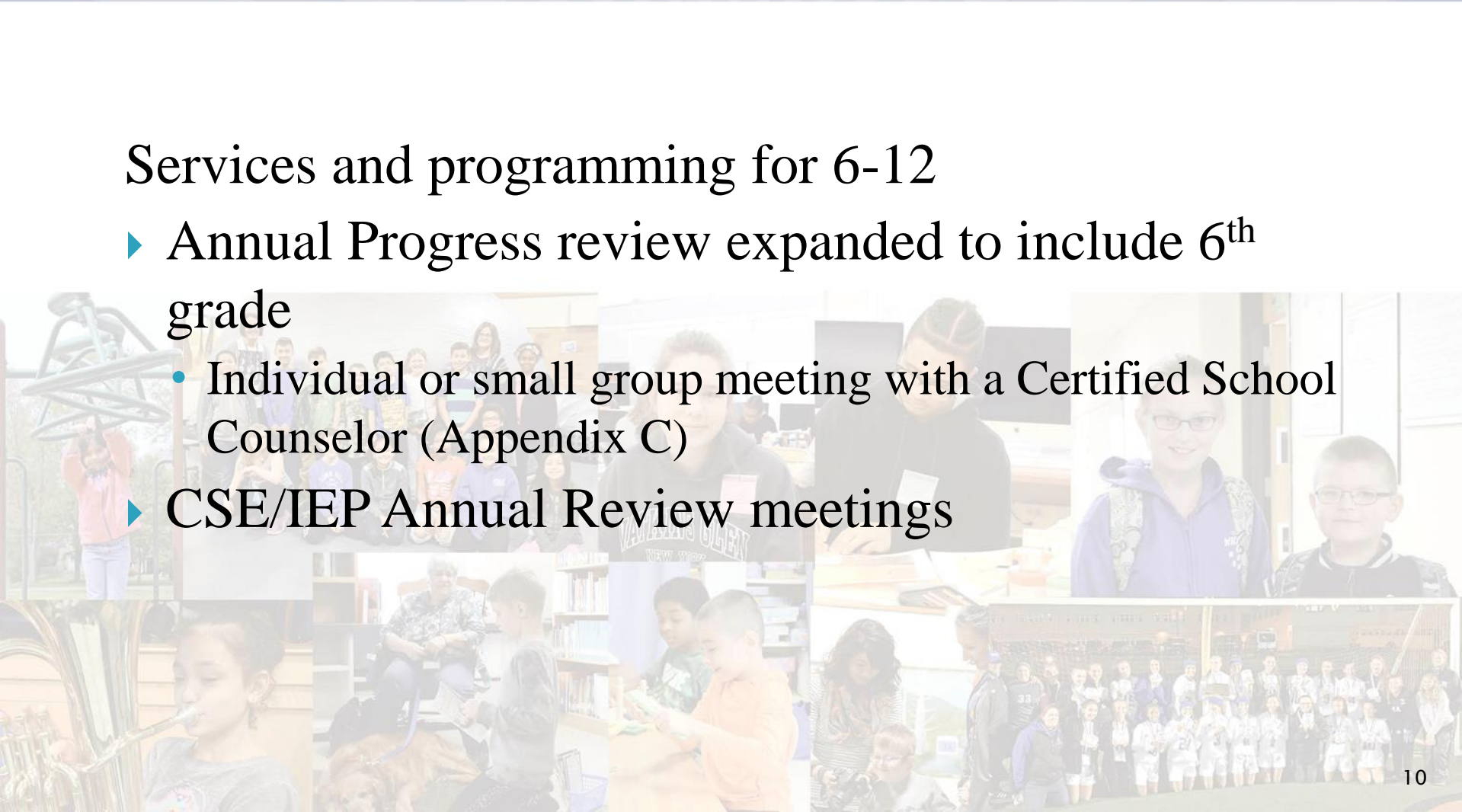
- ▶ Data must be collected to ensure unmet student needs are addressed by tier 2 or 3 supports

# The Services: 6-12

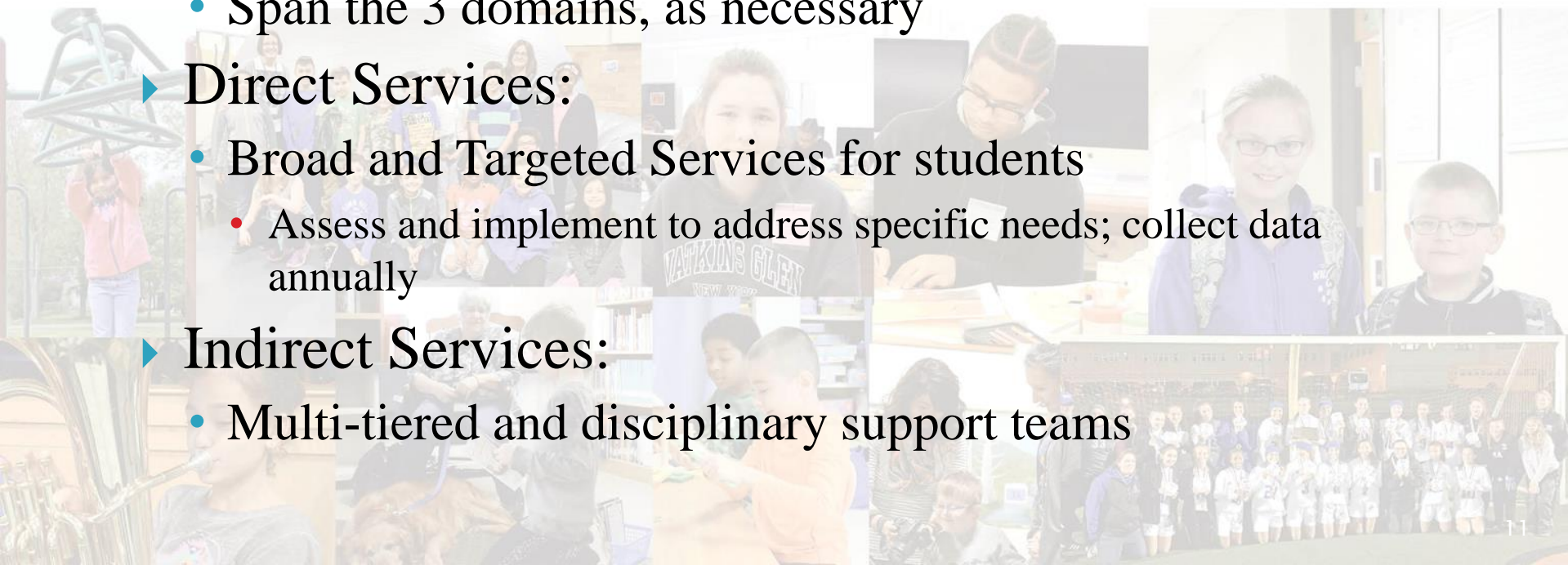
## Services and programming for 6-12

- ▶ Annual Progress review expanded to include 6<sup>th</sup> grade
  - Individual or small group meeting with a Certified School Counselor (Appendix C)
- ▶ CSE/IEP Annual Review meetings

A collage of images showing students and staff engaged in various activities: a student on a playground structure, a group of students and staff, a student playing a trumpet, a student with a dog, students at a table, a student with a camera, and a large group photo of a sports team.

- ## Services and programming for 6-12
- ▶ Annual Progress review expanded to include 6<sup>th</sup> grade
    - Individual or small group meeting with a Certified School Counselor (Appendix C)
  - ▶ CSE/IEP Annual Review meetings
- 
- A collage of images showing students and staff engaged in various activities: a student on a playground structure, a group of students and staff, a student playing a trumpet, a student with a dog, students at a table, a student with a camera, and a large group photo of a sports team.

# School Counseling/Guidance Core Curriculum

- 
- Span the 3 domains, as necessary
  - ▶ **Direct Services:**
    - Broad and Targeted Services for students
      - Assess and implement to address specific needs; collect data annually
  - ▶ **Indirect Services:**
    - Multi-tiered and disciplinary support teams



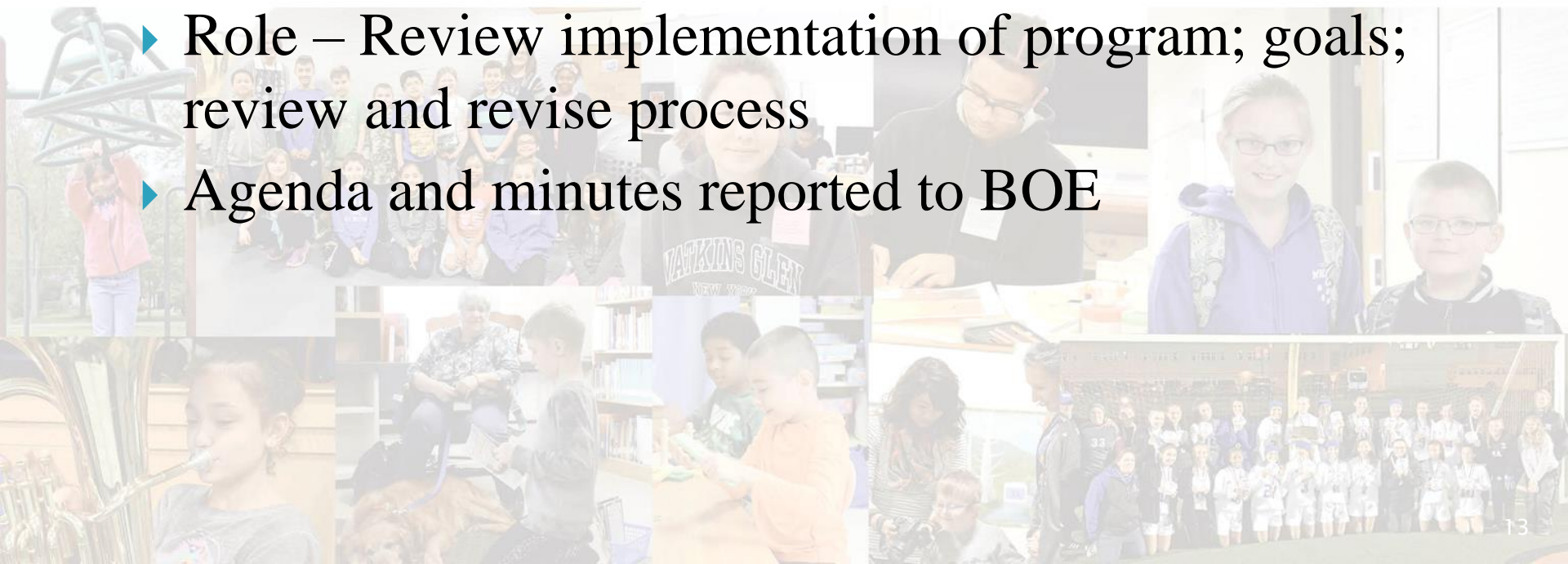
# The Plan

- 
- Program Delivery
  - Program Development
  - ▶ Available on district website

# Advisory Council

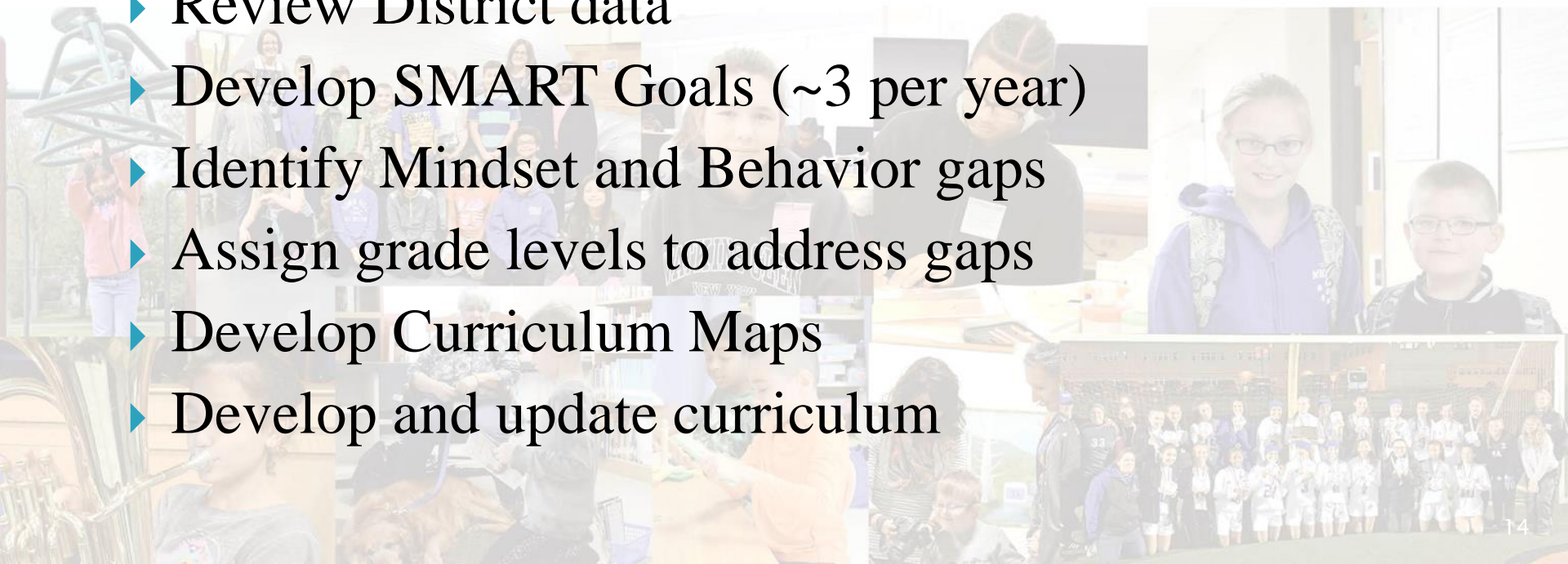
Establish an Advisory Council of stakeholders

- ▶ One per district
- ▶ Meet at least twice per year
- ▶ Role – Review implementation of program; goals; review and revise process
- ▶ Agenda and minutes reported to BOE



# Action Steps

- ▶ The College at Brockport Partnership
- ▶ Identify current Tier 1 Activities
- ▶ Assign Mindsets and Behaviors (ASCA)
- ▶ Review District data
- ▶ Develop SMART Goals (~3 per year)
- ▶ Identify Mindset and Behavior gaps
- ▶ Assign grade levels to address gaps
- ▶ Develop Curriculum Maps
- ▶ Develop and update curriculum





# Action Steps Continued

- ▶ Develop Calendar
- ▶ Develop Assessments
- ▶ Develop a reporting tool
- ▶ Indicate dates for annual review and program revisions
- ▶ Develop and administer needs assessment
- ▶ Identify and Provide Professional Development
- ▶ Develop agreements with Administrators
- ▶ Share final plan with District Office



**Questions?**  
**Thank you for your attention.**

